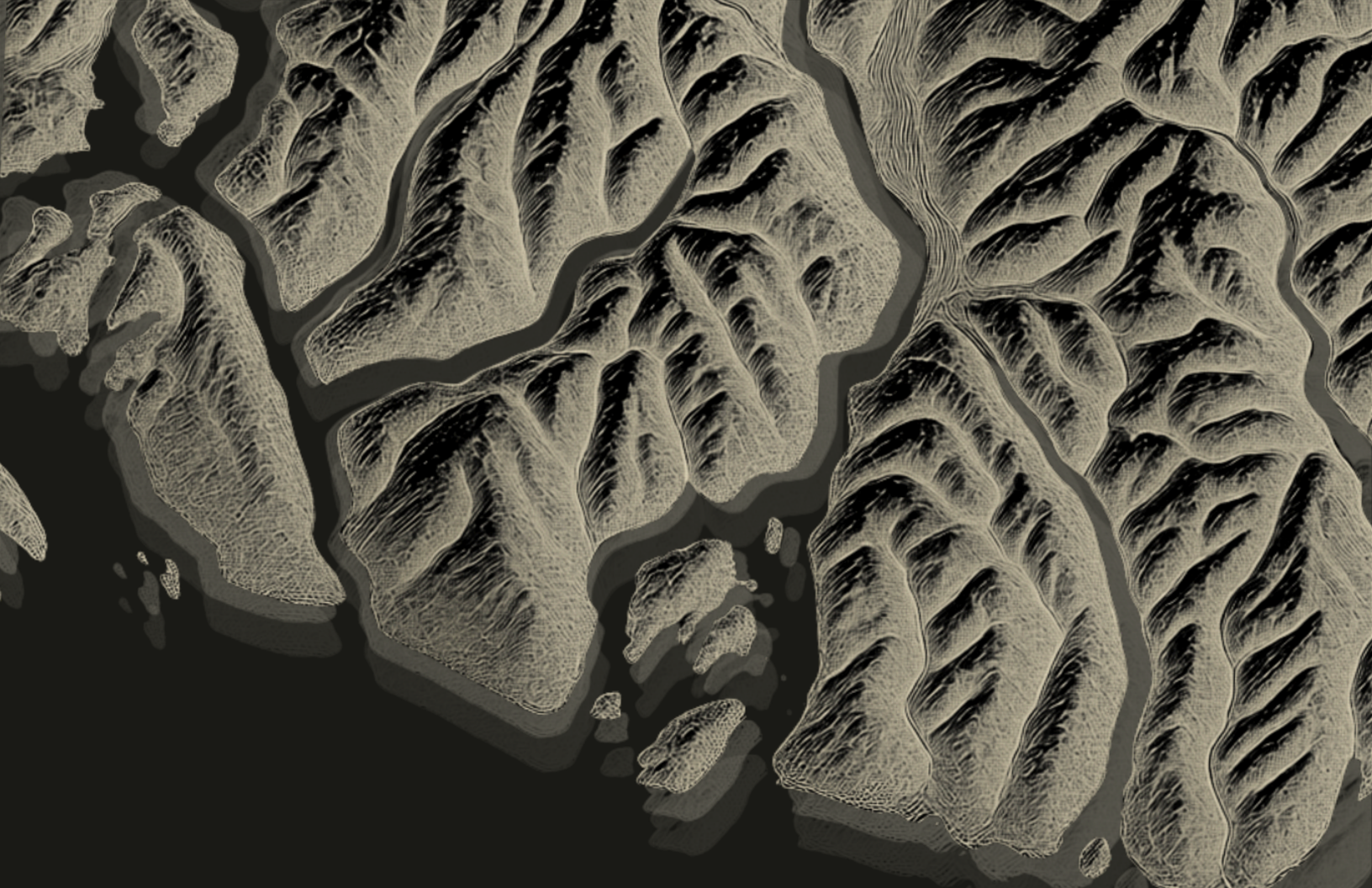




Cabover Habitat

Engineered for anywhere.

MADE IN CANADA | SQUAMISH B.C. | EST.2020



Built Right. Built Here.

Off Grid Customs designs and manufactures premium composite habitats and expedition vehicle systems in Squamish, Canada. Every habitat is engineered, CNC-machined, and assembled in-house using proven materials, processes, and construction methods developed through years of real-world use.

We work with OEM outfitters, trusted partners, and DIY builders to manufacture durable composite habitats and supporting integration components for demanding environments. Every habitat is built to millimetre tolerances using structural composite construction and industry-leading bonding systems, ensuring a finished product that is precise, functional, and built to last.

Cabover Model

Built for Ford F550, Ram5500, and similar trucks.

ID	CABOVER 84CA	DIM
A	Base Length	155"
B	Overall Width	93"
C	Overall Height	88"
D	Cabover Length	60"
BASE PRICE: \$58,000 CAD		



OPTIONAL FEATURES		
Extended Cabover	80"	+2,804 CAD
Departure Angle	18"	+1,933 CAD

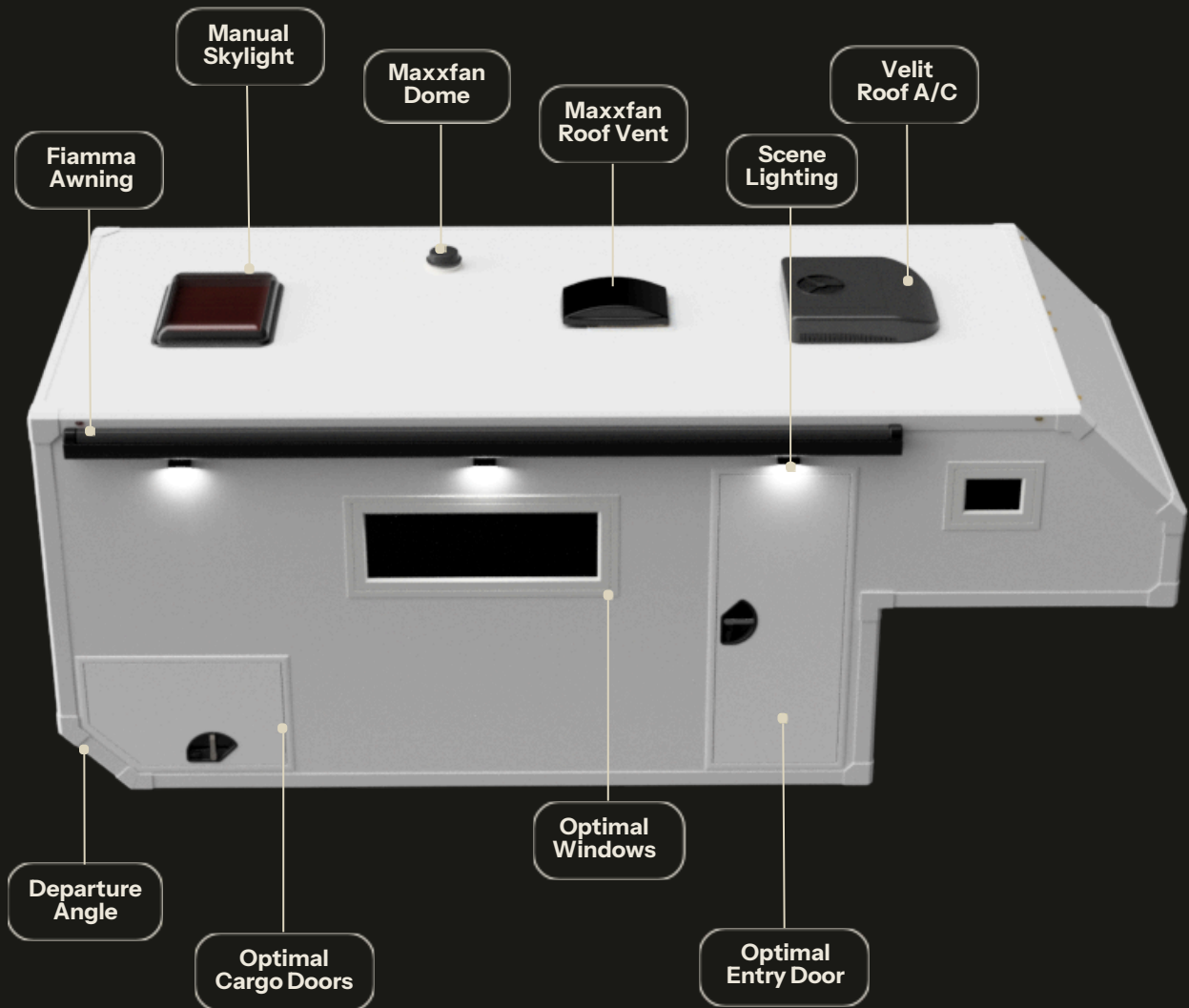
**All features are fully customizable to your spec. Habitat is fixed to chassis via subframe.



**All pricing excludes taxes

Built to Your Spec.

Every habitat begins with a proven structural foundation.
From there, it becomes yours.



The additional options above represent a range of available customizations, grouped by supplier and system.

During the design phase we will guide you through the selections that make most sense for your chassis, your intended use, and your outfitting plans.

*All prices shown include hardware and installation.

Tern Overland

Optional Features Entry Doors & Windows

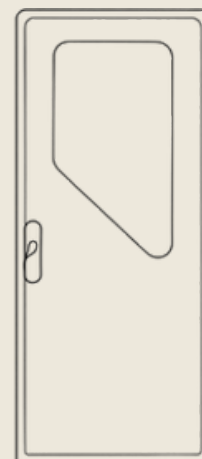
Windows EV2 Flat Model	
Height x Width (mm)	Pricing (CAD)
300x500	\$836
300x700	\$912
300x1100	\$1,065
400x450	\$888
400x700	\$1,053
450x500	\$895
450x610	\$931
450x800	\$1,066
450x900	\$1,067
450x1100	\$1,175
500x300	\$836
500x450	\$895
500x900	\$1,105
500x1200	\$1,251
550x700	\$1,028
550x900	\$1,120

Windows EV2 Flat Model	
Height x Width (mm)	Pricing (CAD)
550x1100	\$1,416
550x1450	\$1,615
230x400	\$794
600x500	\$1,047
800x700	\$1,331
800x1000	\$1,403
900x900	\$1,375
1000x800	\$1,403

Manual Skylight	
700x500	\$1,505

Wildlands Entry Doors	
Height x Width (mm)	Pricing (CAD)
1750x622	\$2,287
1822x622	\$2,402

Euro Entry Door	
1810x600	\$2,285



Pricing INCLUDES hardware & installation

*All pricing excludes taxes

Tern Tech Info - Doors
Tern Tech Info - Windows

Tern Overland

Optional Features Cargo Doors



Cargo Doors SD009	
Height x Width (mm)	Pricing (CAD)
300x300	\$831
300x400	\$853
300x500	\$869
300x600	\$890
300x700	\$906
300x900	\$847
400x400	\$874
400x500	\$890
400x600	\$917
400x700	\$939
400x800	\$1,035
400x900	\$1,057
400x1000	\$1,078
400x1200	\$1,116
500x500	\$912
500x600	\$905
500x700	\$1,041
500x800	\$1,062
500x900	\$1,089
500x1000	\$1,110
500x1100	\$1,132

Cargo Doors SD009	
Height x Width (mm)	Pricing (CAD)
500x1300	\$1,186
600x600	\$1,636
600x700	\$1,068
600x800	\$1,094
600x900	\$1,127
600x1000	\$1,148
700x700	\$1,094
700x800	\$1,121
700x900	\$1,148
700x1000	\$1,175
700x1100	\$1,202
800x800	\$1,148
800x900	\$1,175
800x1000	\$1,213
800x1300	\$1,379
900x1000	\$855
1000x1000	\$1,272
1400x1400	\$1,556
+CUSTOM DIMENSIONS	\$ UPON REQUEST

Pricing INCLUDES hardware & installation

*All pricing excludes taxes

Tern Tech Info - Cargo Doors

Optimal Expedition

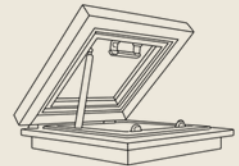
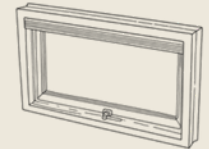
Optional Features Doors & Windows

Entry Doors	
Width x Height (mm)	Pricing (CAD)
737x1814	\$3,616
737x1980	\$3,778



Windows	
Width x Height (mm)	Pricing (CAD)
388x488	\$2,539
428x588	\$2,539
488x388	\$2,539
488x588	\$2,539
588x428	\$2,539
588x488	\$2,539
788x388	\$3,205
788x588	\$2,604
808x488	\$2,604
928x488	\$2,838
928x538	\$3,271
988x588	\$2,964
1188x588	\$2,998
1388x588	\$3,096

Skylights With screen & sunshade	
Width x Height (mm)	Pricing (CAD)
574x574	\$3,053
1034x729	\$3,701



[Optimal Tech Sheet - Doors](#)

[Optimal Tech Sheet - Windows](#)

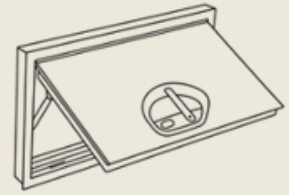
[Optimal Tech Sheet - Skylights](#)

Pricing INCLUDES hardware & installation

*All pricing excludes taxes

Optimal Expedition

Optional Features Horizontal Hatch Doors



Cargo Doors Horizontal	
Width x Height (mm)	Pricing (CAD)
444x444-H	\$2,640
444x570-H	\$2,640
444x617-H	\$2,640
444x717-H	\$2,640
444x766-H	\$2,640
570x444-H	\$2,640
570x570-H	\$2,721
570x617-H	\$2,721
570x717-H	\$2,721
570x766-H	\$2,721
570x902-H	\$2,721
617x444-H	\$2,721
617x570-H	\$2,721
617x617-H	\$2,721
617x717-H	\$2,883
617x766-H	\$2,721
617x902-H	\$2,720
717x444-H	\$2,802
717x570-H	\$2,802
717x617-H	\$2,721
717x717-H	\$2,883

Cargo Doors Horizontal	
Width x Height (mm)	Pricing (CAD)
717x766-H	\$2,883
717x902-H	\$2,964
717x1104-H	\$2,964
766x444-H	\$2,964
766x570-H	\$2,964
766x617-H	\$2,964
766x717-H	\$2,964
766x766-H	\$2,964
766x902-H	\$2,964
766x1104-H	\$2,964
902x444-H	\$2,964
902x570-H	\$2,964
902x617-H	\$2,964
902x717-H	\$2,964
902x766-H	\$2,964
902x902-H	\$2,964
902x1104-H	\$3,045
902x1276-H	\$3,045
1104x444-H	\$2,964
1104x509-H	\$2,964

Cargo Doors Horizontal	
Width x Height (mm)	Pricing (CAD)
1104x570-H	\$2,964
1104x617-H	\$2,964
1104x717-H	\$2,964
1104x766-H	\$3,045
1104x902-H	\$3,126
1104x1104-H	\$3,126
1104x1276-H	\$3,207
1276x444-H	\$3,239
1276x570-H	\$3,045
1276x617-H	\$3,045
1276x717-H	\$3,045
1276x766-H	\$3,045
1276x902-H	\$3,045
1276x1104-H	\$3,207
1814x737-H	\$3,531
1980x737-H	\$3,693

Pricing INCLUDES hardware & installation

*All pricing excludes taxes

Optimal Tech Sheet

Optimal Expedition

Optional Features Vertical Cargo Doors



Cargo Doors Vertical	
Width x Height (mm)	Pricing (CAD)
444x444-V	\$2,640
444x570-V	\$2,640
444x617-V	\$2,721
444x717-V	\$2,802
444x766-V	\$2,964
444x902-V	\$2,964
444x1104-V	\$2,964
444x1276-V	\$3,045
570x444-V	\$2,640
570x570-V	\$2,721
570x617-V	\$2,721
570x717-V	\$2,802
570x766-V	\$2,964
570x902-V	\$2,964
570x1104-V	\$2,964
570x1276-V	\$3,045
617x444-V	\$2,640
617x570-V	\$2,721
617x617-V	\$2,721
617x717-V	\$2,721
617x766-V	\$2,964

Cargo Doors Vertical	
Width x Height (mm)	Pricing (CAD)
617x1104-V	\$2,964
617x1276-V	\$3,045
717x570-V	\$2,721
717x617-V	\$2,892
717x717-V	\$2,883
717x766-V	\$2,964
717x902-V	\$2,964
717x1104-V	\$2,964
717x1276-V	\$3,045
766x570-V	\$2,721
766x617-V	\$2,721
766x717-V	\$2,883
766x766-V	\$2,964
766x902-V	\$2,964
766x1104-V	\$3,045
766x1276-V	\$3,045
902x717-V	\$2,964
902x766-V	\$2,964
902x902-V	\$2,964
902x1104-V	\$3,126
902x1276-V	\$3,045

Cargo Doors Vertical	
Width x Height (mm)	Pricing (CAD)
1104x902-V	\$3,045
1104x1104-V	\$3,126
1104x1276-V	\$3,126

Pricing INCLUDES hardware & installation

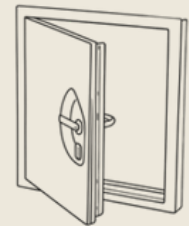
*All pricing excludes taxes

Optimal Expedition

Optional Features Bevel Cargo Doors

Cargo Doors Horizontal w/ Bevel	
Width x Height (mm)	Pricing (CAD)
1104x717-HB	\$3,126
1104x766-HB	\$3,126
1104x902-HB	\$3,207
1104x917-HB	\$3,207
1104x1104-HB	\$3,207
1104x1276-HB	\$3,960
1276x717-HB	\$3,207
1276x766-HB	\$3,207
1276x902-HB	\$3,369
1276x1104-HB	\$3,450

Cargo Doors Vertical w/ Bevel	
Width x Height (mm)	Pricing (CAD)
717x1104-VB	\$3,126
717x1276-VB	\$3,207
766x1104-VB	\$3,126
766x1276-VB	\$3,207
902x1104-VB	\$3,207
902x1276-VB	\$3,369
1104x1104-VB	\$3,207
1104x1276-VB	\$3,450



Cargo Doors Passthrough	
Width x Height (mm)	Pricing (CAD)
617x617-P	\$2,721
617x717-P	\$2,804
617x766-P	\$2,964
617x902-P	\$2,964
617x1104-P	\$3,181
617x1276-P	\$3,268

Cargo Doors Passthrough	
Width x Height (mm)	Pricing (CAD)
717x617-P	\$2,721
717x717-P	\$2,883
717x766-P	\$2,964
717x902-P	\$2,964
717x1104-P	\$2,964
717x1276-p	\$3,045

Pricing INCLUDES hardware & installation

*All pricing excludes taxes

[Optimal Tech Sheet - Horizontal](#)

[Optimal Tech Sheet - Vertical](#)

Lighting

Optional Feature

Scandvik Interior Lights	Pricing (CAD)
Scandvik Pre Wired Pucks (x2)	\$628
Scandvik Pre Wired Pucks (x4)	\$1,058
Scandvik Pre Wired Pucks (x6)	\$1,487
Scandvik Pre Wired Pucks (x8)	\$1,916



Black Rigid Exterior Lights	Pricing (CAD)
Black Rigid Scene Lights (x1)	\$549
Black Rigid Scene Lights (x2)	\$927
Black Rigid Scene Lights (x4)	\$1,685
Black Rigid Scene Lights (x6)	\$2,442

DOT Marker Lights	Pricing (CAD)
DOT Package - Cabover Habitat	\$2,019

Pricing INCLUDES hardware & installation

*All pricing excludes taxes

[Contact for Technical Info](#)

Interior Walls

Optional Features Wetrooms

1.25" Honeycomb composite panels	Dimensions	Pricing (CAD)
2 Wall Wetroom - Small	28" x 36"	\$4,716
2 Wall Wetroom - Large	32" x 60"	\$5,027
3 Wall Wetroom - Small	28" x 36"	\$5,249
3 Wall Wetroom - Large	32" x 60"	\$5,592



Pricing includes installation and trim.

Partition walls, bed platforms, and storage boxes available on request. We can work with you during the design phase for any custom design.

Raw interior panels are also available for DIY installation.

Pricing INCLUDES hardware & installation

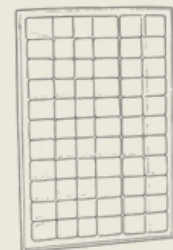
***All pricing excludes taxes**

Contact for Technical Info

Roof Components

Optional Features

MaxxFan & Broad Arrow Roof Fans, Vents, and Skylight	Pricing (CAD)
MaxxFan Dome - Small Fan with Exhaust Only	\$493
MaxxFan Deluxe - Manual	\$1,026
MaxxFan Deluxe - Remote	\$1,172
Velit Rooftop Air Conditioner	Pricing (CAD)
2000R Rooftop AC (12V/24V/48V)	\$3,772
3000R Rooftop AC (24V/48V)	\$4,731
Solar Choice of Mounting Positions	Pricing (CAD)
220W - Pre-Wired Solar Kit	\$1,292
440W - Pre-Wired Solar Kit (2X series)	\$2,110
660W - Pre-Wired Solar Kit (3X series)	\$2,909
880W - Pre-Wired Solar Kit (2X series 2X Parallel)	\$3,781
Fiamma USA Exterior electric Awning	Pricing (CAD)
Fiamma Awning - F45 Eagle 400	\$5,949



All selected options will be specified in detail on your itemized estimate. Additional customizations are accommodated on a case-by-case basis depending on your chassis and habitat selections.

Pricing INCLUDES hardware & installation

*All pricing excludes taxes

[Contact for Technical Info](#)

Exterior Modifications

Optional Features
Exterior

Exterior Packages	Pricing (CAD)
Brush Guards	\$6,154
Brush Guard Cross Bars	\$458
Exterior L Track - Rear Wall	\$1,229
Habitat Mount To Chassis	\$1,950

All options can be tailored to your chassis or platform, and pricing may vary depending on the final design and configuration.

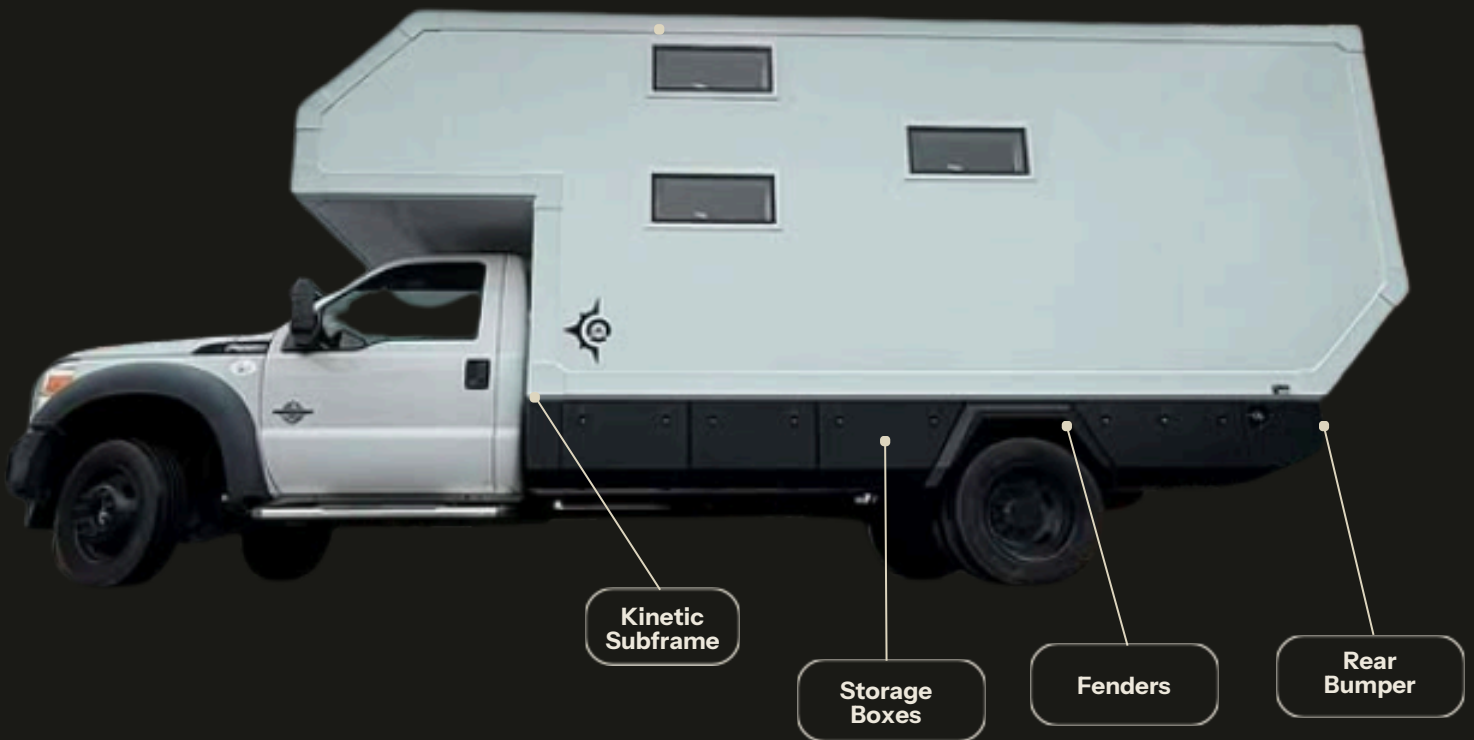
Additional customizations are accommodated on a case-by-case basis depending on your chassis and habitat selections.

Pricing INCLUDES hardware & installation

***All pricing excludes taxes**

Chassis Integration

Every cabover build is different. We can help design and fabricate the supporting components needed to integrate your habitat with your chassis.



In addition to our standard exterior accessories, we can help with a range of custom fabrication and chassis integration solutions. We can work with you to design the right subframe, under mount storage boxes, entry stairs, spare tire carriers, ladders, or other custom accessories for your build.

All options can be tailored to your chassis or platform, and pricing may vary depending on the final design and configuration.



38924 Mid Way
Squamish, B.C.
V8B 1B5 Canada
WWW.OFFGRIDCUSTOMS.COM
INFO@OFFGRIDCUSTOMS.COM